

Vérins électriques de précision T90 – T130

Precision Linear Actuators –Vérins haute capacité série T

www.rosier.fr

T90

Ball Screw Drive, Slide Guide

» Ordering key - see page 218
 » Accessories - see page 137
 » Additional data - see page 195

General Specifications

Parameter	T90
Profile size (w x h) [mm]	90 x 92
Type of screw	ball screw with single nut
Protection class	IP65
Lubrication	One point lubrication of ballscrew
Included accessories	

Performance Specifications

Parameter		T90
Stroke length (S max), maximum	[mm]	1500
Linear speed, maximum	[m/s]	2,0
Acceleration, maximum	[m/s ²]	8
Repeatability	[± mm]	0,05
Input speed, maximum	[rpm]	
screw diameter/lead 25/05 mm		4000
screw diameter/lead 25/10, 25/25 mm		4800
screw diameter/lead 32/20, 32/32 mm		3750
Operation temperature limits	[°C]	-20 70
Dynamic load (Fx), maximum	[N]	
screw diameter 25 mm		10000
screw diameter 32 mm		20000
Dynamic load (Fy), maximum	[N]	
screw diameter 25 mm		300 ¹
screw diameter 32 mm		500 ¹
Dynamic load (Fz), maximum	[N]	
screw diameter 25 mm		300 ¹
screw diameter 32 mm		500 ¹
Dynamic load torque (Mz, My), maximum	[Nm]	150 ¹
Drive shaft force (Frd), maximum	[N]	
screw diameter 25 mm		1000
screw diameter 32 mm		1300
Drive shaft torque (Mta), maximum	[Nm]	
screw diameter 25 mm		48
screw diameter 32 mm		93

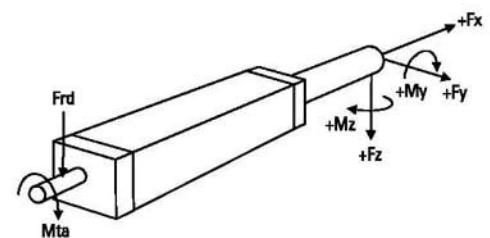
¹ Value for the complete unit

Rod Idle Torque (M idle) [Nm]

Input speed [rpm]	Screw lead [mm]				
	p = 5	p = 10	p = 20	p = 25	p = 32
500	1,5	1,5	3,0	2,0	3,5

M idle = the input torque needed to move the rod with no load on it.

Definition of Forces



Performance Specifications

Parameter		T90
Screw versions, diameter (do) / lead (p)	[mm]	25/05, 25/10, 25/25 32/20, 32/32
Weight of units with screw diameter 25 mm of unit with zero stroke of every 100 mm of stroke of the rod with zero stroke of every 100 mm of rod	[kg]	8,16 1,62 0,52 0,60
Weight of units with screw diameter 32 mm of unit with zero stroke of every 100 mm of stroke of the rod with zero stroke of every 100 mm of rod	[kg]	10,64 1,80 0,55 0,60

Vérins électriques de précision T90 – T130

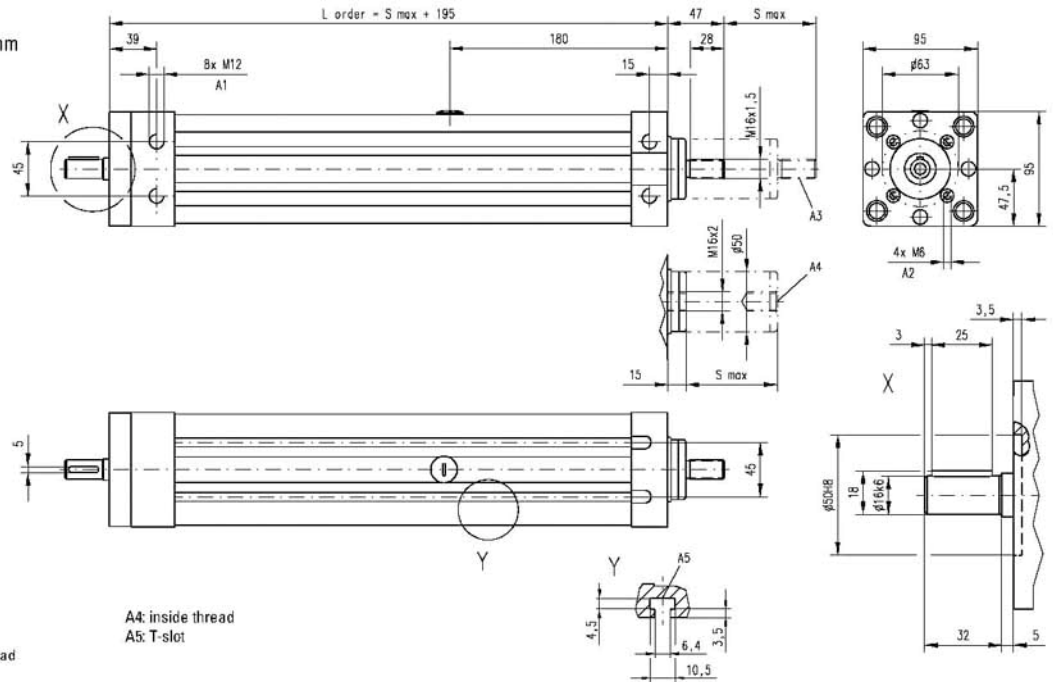
Precision Linear Actuators –Vérins haute capacité série T

www.rosier.fr

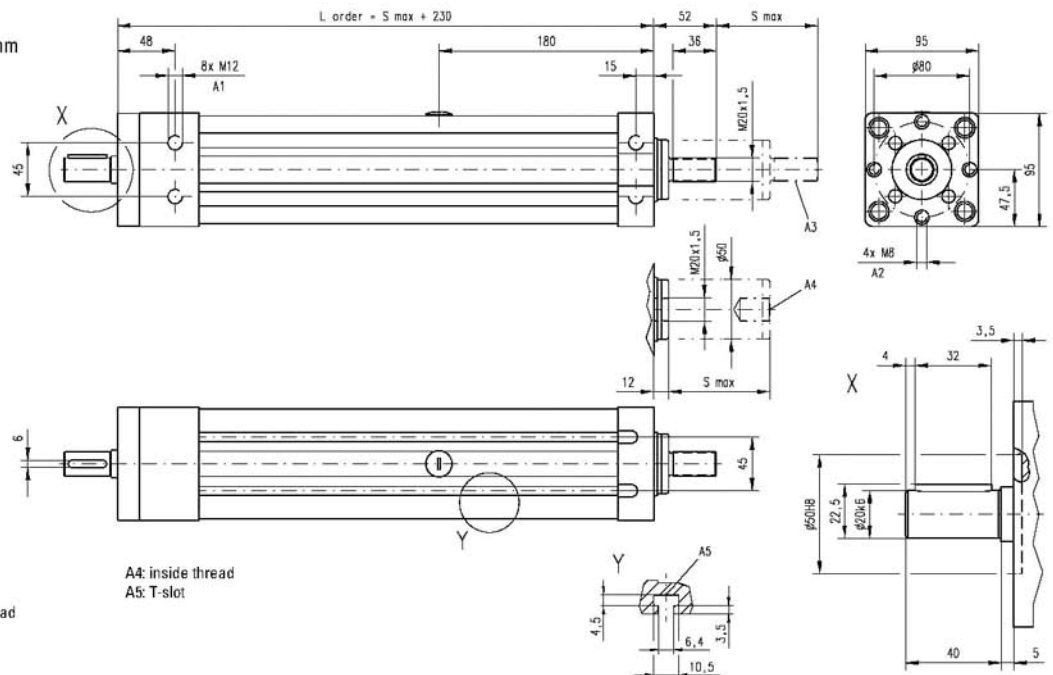
T90

Ball Screw Drive, Slide Guide

T09-B25
screw $\varnothing 25$ mm



T09-B32
screw $\varnothing 32$ mm



Vérins électriques de précision T90 – T130

Precision Linear Actuators –Vérins haute capacité série T

www.rosier.fr

T130

Ball Screw Drive, Slide Guide

- » Ordering key - see page 218
- » Accessories - see page 137
- » Additional data - see page 195

General Specifications

Parameter	T130
Profile size (w × h) [mm]	130 × 130
Type of screw	ball screw with single nut
Protection class	IP65
Lubrication	One point lubrication of ballscrew
Included accessories	

Performance Specifications

Parameter		T130
Stroke length (S max), maximum	[mm]	2000
Linear speed, maximum	[m/s]	2,0
Acceleration, maximum	[m/s ²]	8
Repeatability	[± mm]	0,05
Input speed, maximum	[rpm]	
screw lead 10 mm		2500
screw lead 20, 40 mm		3000
Operation temperature limits	[°C]	- 20 70
Dynamic load (Fx), maximum	[N]	
screw lead 10 mm		40000
screw lead 20 mm		35000
screw lead 40 mm		15000
Dynamic load (Fy), maximum	[N]	800 ¹
Dynamic load (Fz), maximum	[N]	800 ¹
Dynamic load torque (My, Mz), maximum	[Nm]	300 ¹
Drive shaft force (Frd), maximum	[N]	3000
Drive shaft torque (Mta), maximum	[Nm]	140
Ball screw diameter (p)	[mm]	40
Ball screw leads (d0)	[mm]	10, 20, 40
Weight	[kg]	
of unit with zero stroke		18,50
of every 100 mm of stroke		3,00
of the rod with zero stroke		1,25
of every 100 mm of rod		0,77

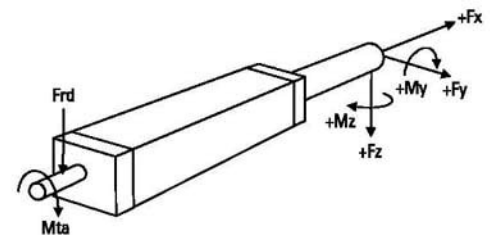
¹ Value for the complete unit

Rod Idle Torque (M idle) [Nm]

Input speed [rpm]	Screw lead [mm]		
	p = 10	p = 20	p = 40
500	4,5	4,5	5,5

M idle = the input torque needed to move the rod with no load on it.

Definition of Forces



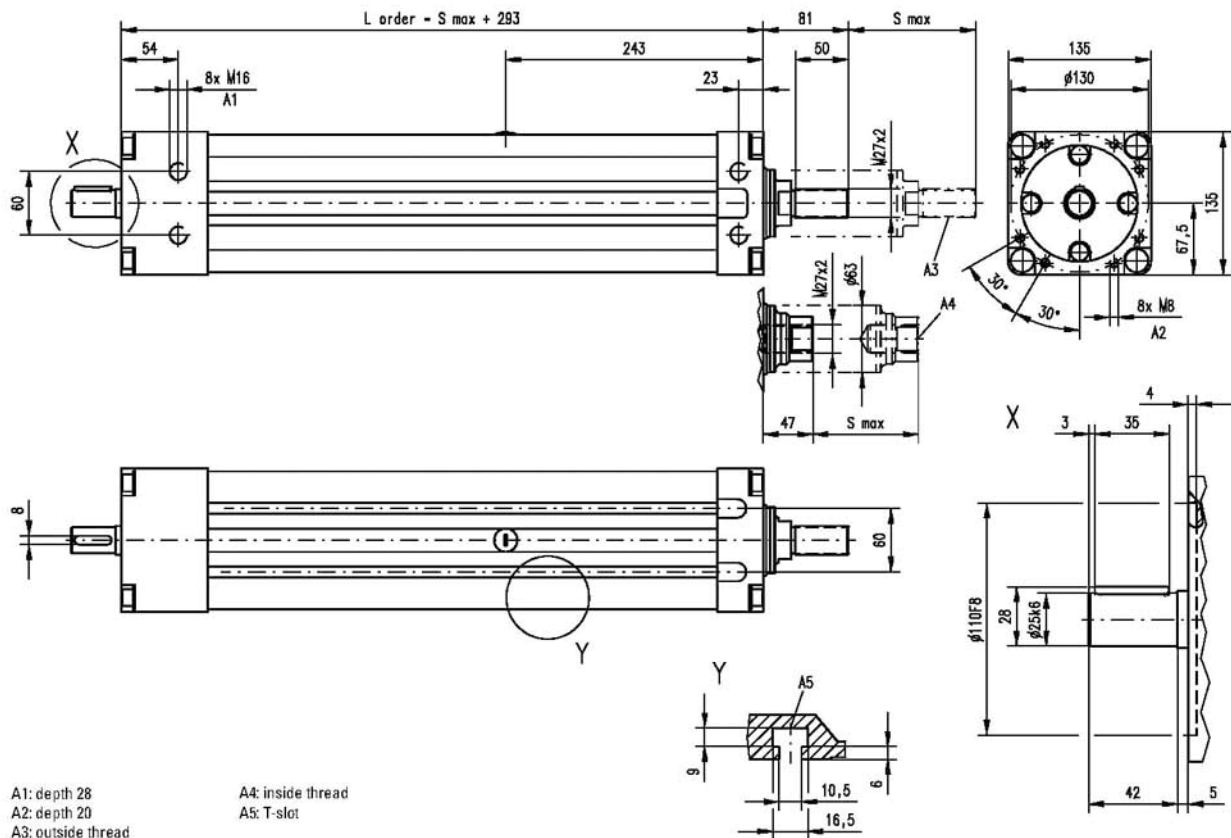
Vérins électriques de précision T90 – T130

Precision Linear Actuators –Vérins haute capacité série T

www.rosier.fr

T130

Ball Screw Drive, Slide Guide





SPÉCIALISTE DU MOUVEMENT



□□rue □Sigmund □Breud □

□□□□□Vaulx □en □Velin □

Tél □□□□□□□□□□□□□□□□

contact@rosier.fr □□

www.rosier.fr

Agence Paris □

Tél □□□□□□□□□□□□□□□□

Fax □□□□□□□□□□□□□□□□

