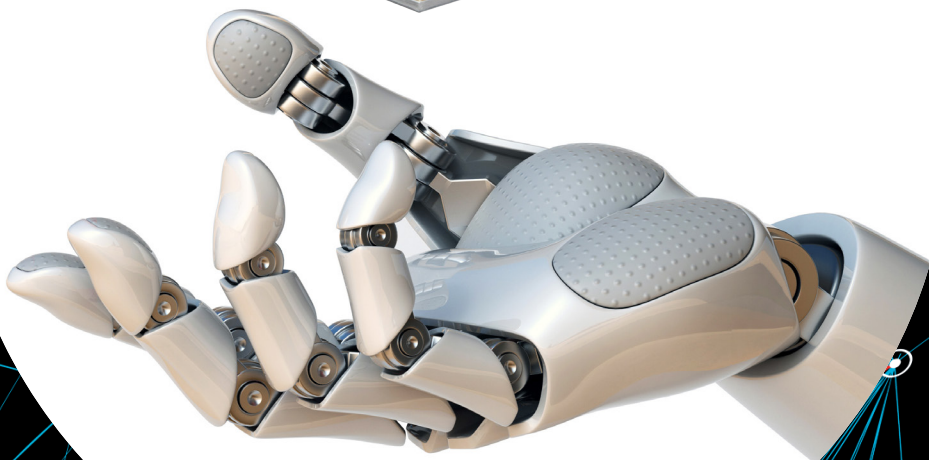
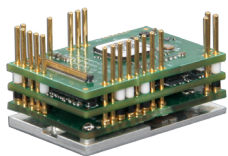


ADVANCED MOTION CONTROLS

FlexPro™



Introducing our...

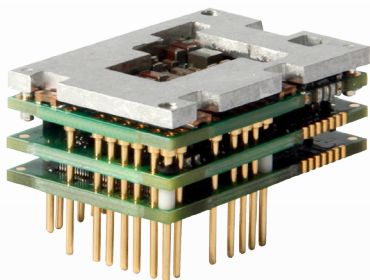
Smallest,

Most Versatile,

Most Advanced,

...Servo Drives to date!

Growing doesn't always mean getting bigger.



FE060-25-EM - Actual Size!

We're in a new era of motion control where advancements in robots and automation are accelerating at a rapid pace.

There is a growing demand for smaller, more versatile, and higher power servo drives that are designed to easily integrate into ever-tightening constraints.

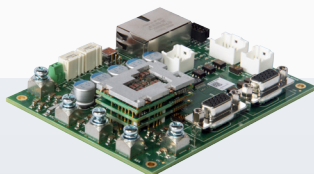
We have accepted the challenge and answered the call!

Introducing a new family of drives, FlexPro™.

FE060-25-EM Specifications

Input Voltage	10 - 55 VDC
Peak Output Current	50 A
Continuous Output Current	25 Arms
Network Communication	EtherCAT
Feedback Supported	BiSS C-Mode, Incremental Encoder
Dimensions	38 x 25 x 16 (mm)

Also available in a development board assembly for easy connections to motor, power, feedback, and controller signals - model number **FD060-25-EM**.



Upcoming support for...

**CANopen, RS485, other
Ethernet fieldbuses**

**Absolute (EnDat,
Hiperface), Sin/Cos, and
Resolver Feedback**

Higher power levels

**Building block for
modifications and
complete custom solutions**

Perfect for...

Cobots

Warehouse Robots and AGVs

Portable/Mobile Devices

Integrated Designs

Lab Automation

...And endless others!

 **ADVANCED**
MOTION CONTROLS
Everything's Possible.

**3805 Calle Tecate
Camarillo, CA 93012
www.a-m-c.com
805.389.1935**